

联系方式 CONTACT US

☎ 客服热线 +86 21 31591616

Add: No 4900 Baoan Road, Shanghai
Post code: 201814
Tel: 0086 21 59504880
Fax: 0086 21 59504880
Email: 13917463936@163.com

Add: 568 Shenfu Road, Min Hang District, Shanghai
Post code: 201108
Tel: 0086 21 64891080
Fax: 0086 21 54249338
Email: 13701770284@jktac.com

Add: 568 Shenfu Road, Min Hang District, Shanghai
Post code: 201108
Tel: 0086 21 64891080
Fax: 0086 21 54249338
Email: xuqin1008@163.com

地址: 上海市嘉定区宝安公路4900号
邮编: 201814
电话: (021)59504880
传真: (021)59504880
电子邮箱: 13917463936@163.com

地址: 上海市闵行区申富路568号11号楼3楼
邮编: 201108
电话: (021)64891080
传真: (021)54249338
电子邮箱: 13701770284@jktac.com

地址: 上海市闵行区申富路568号11号楼3楼
邮编: 201108
电话: (021)64891080
传真: (021)54249338
电子邮箱: xuqin1008@163.com



地址: 上海市嘉定区宝安公路4900号
Add: No 4900 Baoan Road, Jia Ding District, Shanghai



地址: 上海市闵行区申富路568号
Add: 568 Shenfu Road, Min Hang District, Shanghai



TESTING PROVES VALUE 检验验证价值



上海建科检验有限公司

Shanghai Jianke Technical Assessment of Construction Co., Ltd.

上海建筑幕墙检测中心

Shanghai Testing Center of Curtain Wall in SRIBS

关于我们

ABOUT US

上海建筑幕墙检测中心是由上海市建筑科学研究院于1997年创立的专业幕墙检测机构，由中国实验室国家认可委员会按照检测和校准实验室能力认可准则ISO/IEC 17025对实验室进行能力验证。现共有莘庄和嘉定两处试验基地，嘉定是亚洲最大的幕墙实验基地之一。

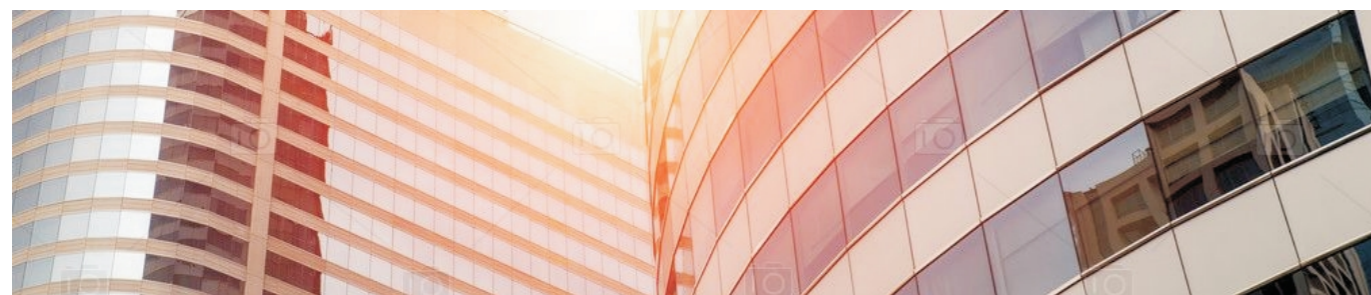
嘉定幕墙检测箱体采用钢筋混凝土结构，平面呈“L”型，总长度40.7米，高度20米，最大样品尺寸为宽度20米，高度20米，能满足超大、超高、异型及其他形式复杂的建筑幕墙测试需要，并可根据客户要求变更、改造箱体。

幕墙实验室设备先进，能按国标GB、美国测试与材料协会标准ASTM和美国建筑制造商协会AAMA、英标CWCT、欧标EN、澳大利亚和新西兰联合标准AS/NZS以及香港标准PNAP进行气密性能、静态&波动&动态水密性能、结构性能、地震位移试验、热循环测试、传热系数和抗冷凝因子测试等，所有检测能力均通过国家认可委评审。

Shanghai Testing Center of Curtain Wall is a professional testing organization which is primarily set up by Shanghai Research Institute of Building Science in 1997 and accredited by China Nation Accreditation Service according to ISO/IEC 17025 (Accreditation Criteria for the Competence of Testing and Calibration Laboratories). Today it has two labs located in Xinzhuang and Jiading. Jiading Laboratory has one of the biggest chamber of curtain wall in Asia.

The testing chamber in Jiading Lab adopts reinforced concrete structure in “L” shape. The total length of the testing chamber is 40.7m, and the height is 20m. The test chamber capacity measuring at approximately W20m × H20m. The lab has advanced equipments, which will be able to conduct prescribed performance testing for Curtain wall, Cladding system, Windows & Doors and Skylights, etc.

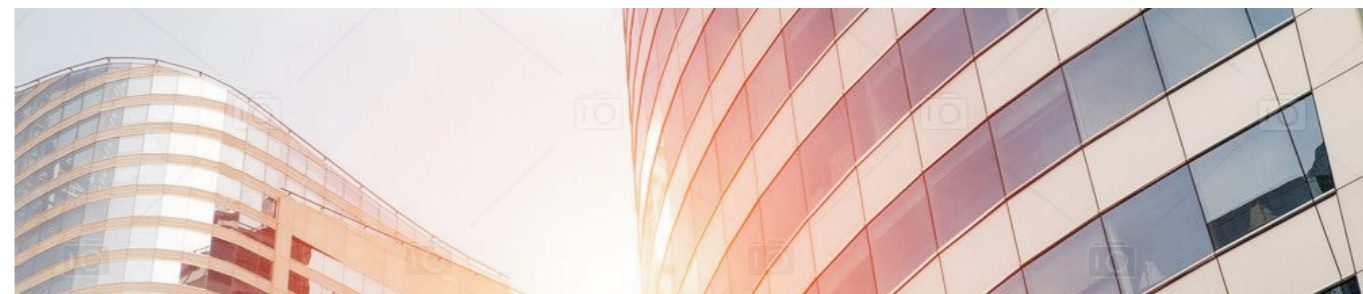
This facility is able to perform Air Infiltration test, Static & Cyclic or Dynamic Water Penetration tests, Structural Performance test, Seismic Movement test, Thermal Cycle test and Thermal Transmittance and Condensation Resistance test. These tests are conducted to ensure that the system tested are in compliance with international standards & methods like AS/NZS Australia Standard & New Zealand Standard, AAMA American Standard, ASTM American Standard, CWCT British Standard, EN European Standard, Hong Kong PNAP Standard or any other standards or methods required by the Authority.



检测能力

DETECTION CAPABILITY

- 气密性能
- Air Infiltration
- 水密性能（静态、波动、动态）
- Water Permeability (static, cyclic or dynamic)
- 结构性能
- Structural Performance
- 地震位移
- Seismic Racking
- 耐撞击性能
- Impact
- 热循环及结露
- Thermal Cycling and condensation resistance
- 现场淋水试验
- Field Water Penetration
- 擦窗机集中力荷载试验
- Concentrated Load Test
- 幕墙传热系数、遮阳系数
- U-factor and SHGC, VT of Curtain Wall
- 隔声性能
- Sound Insulation Performance
- 金属屋面抗风掀性能
- Wind Lift Performance



参照标准

REFERENCE STANDARD

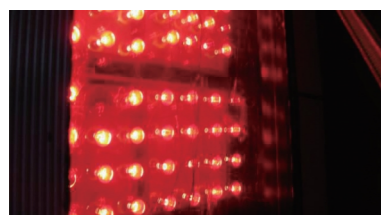
- **中国标准:** GB/T 21086、GB/T 15227、GB/T 18250、JGJ 102、JGJ 133、GB/T 19889.3-2005/ISO 140-3:1995、GB/T19889.4-2005/ISO 140-4:1995、GB/T19889.5-2005/ISO 140-5:1995、GB/T19889.7-2005/ISO 140-7:1995、JGJ 255-2012
- **香港标准:** PNAP 106
- **澳大利亚和新西兰联合标准:** AS/NZS4284
- **美国标准:** ASTM E 283、ASTM E 330、ASTM E 1233、ASTM E 331、ASTM E 547、AAMA 501.2、AAMA 501.1、AAMA 501.4、AAMA 501.5、AAMA1503、AAMA 501
- **英国标准:** CWCT
- **欧洲标准:** EN 12153、EN 12152、EN 1026、BS EN 12207、EN 12114、EN 12179、EN 13116、EN 12211、EN 12210、EN 12155、BS EN 12154、EN 1027、BS EN 12208、EN 13051、ENV 13050、EN 12600

试验设备

TEST FACILITIES

- 加压系统能提供的最大正压及负压为12 kPa (250PSF)
- 压力量测装置的能力达到12 kPa
- 喷淋装置能以2.0 L / (m² · min) 、 3.0L / (m² · min) 、 3.4 L / (m² · min) 或 4.0 L / (m² · min) 的速率进行淋水
- 40个位移测量装置能测量挠度
- 飞机引擎装置能提供的风速在50m/s
- 高精度复合气流量测装置

- Air system up to 12kPa (250PSF) positive and negative pressure maximum
- Pressure measuring apparatus up to 12kPa capacity
- Water spray system can be capable of delivering water at 2.0L / (m² · min), 3.0L / (m² · min), 3.4 L / (m² · min) or 4.0 L / (m² · min)
- Forty displacement measuring devices to measure deflection
- Aircraft engine wind generators can be capable of producing a wind velocity in 50m/s
- High-precision composite air flow measurement system



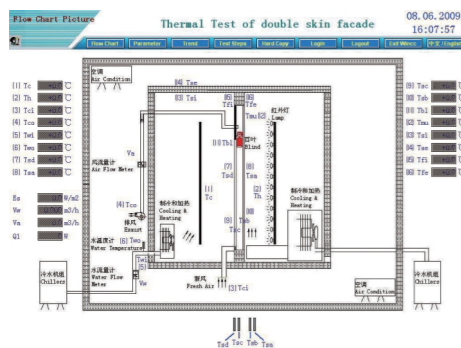
幕墙热循环试验设备
Thermal Cycling Test Equipment



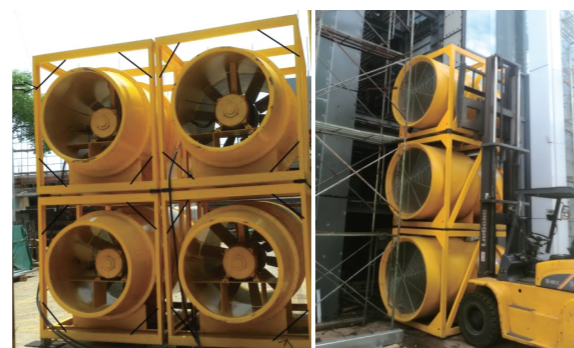
通风防雨百叶、防沙百叶测试装置
Testing Equipment for Wind Driven Rain Performance and Subjected to Sand Performance of Louvres



幕墙动风压装置
Air Craft Engine
(最大风速50m/s)
(Capable of Producing A Wind Velocity In 50m/s)— Dynamic Water Permeability Test



幕墙传热系数及抗冷因子测试系统
Thermal Performance Test Equipment (U-factor and SHGC)



风墙测试设备 Wind-Wall Testing Equipment
(可满足幕墙外装饰条、悬挑构筑物、广告牌、路牌等防风测试, 也可以结合水喷淋系统模拟台风暴雨的综合作用)

项目案例

PROJECT CASES

幕墙实验室技术力量雄厚, 有资深的幕墙评标专家和学科带头人, 拥有一批深厚专业素养的工程师。

至今, 幕墙及门窗实验室已进行了三千多个幕墙测试和四千多个门窗以及其他相关产品的测试, 成功完成的案例中不乏国际上一些卓越的建筑。如上海中心大厦、上海东方体育中心、虹桥磁浮项目、上海世博会诸多场馆 (如中国馆、意大利馆、世博文化中心、世博轴等等) 、浦东机场二期航站楼、宏汇国际广场、21世纪中心大厦、中国平安金融大厦、静安嘉里项目、上海恒隆广场、上海花旗银行、北京京澳中心、长沙黄花机场、无锡科技馆、温州鹿城广场、济南恒隆广场、南京图书馆、南昌昌北机场、美国Foxwood、美国166 Perry Street、迪拜Business Bay、迪拜跑马场、迪拜节日城、迪拜帝王大厦、英国威斯敏斯特桥公园广场项目、巴林银行、特立尼达和多巴哥西班牙港国家艺术中心、悉尼2 Market Street、澳洲ANZ Docklands项目、巴基斯坦拉哈尔电信大楼幕墙工程、柬埔寨安达银行、越南Indochina广场项目、毛里求斯机场等大型玻璃幕墙测试项目。

We have senior experts, leaders, and a group of strong professionals. Indeed, our testing technology is leading the world.

Since 1997, it has finished more than 3000 curtain wall projects and more than 4000 doors & windows and products tests. Completion of the famous grant projects are as follow.

- Shanghai Centre Tower, Shanghai Oriental Sports Center
- Hongqiao Maglev Project
- Pavilions of the World Expo in 2010 Shanghai (the China Pavilion, the Italy Pavilion, World Expo Cultural Center, the Expo Axis, etc.)
- Pudong Airport Terminal 2, Shanghai Honghui International Plaza
- 21st Century Center Building, the Ping' an Financial Tower
- Jing' an Jiali Project, Plaza 66, Shanghai Citigroup Bank
- Beijing Jin' ao Center, Changsha Huanghua Airport, Wuxi Science and Technology Museum
- Jinan Hang Lung Plaza, Nanjing Library, Nanchang Airport
- American Foxwood, 166 Perry Street
- Dubai Business Bay, Dubai Racecourse
- Dubai Festival City, Dubai Empire Tower
- Westminster Bridge Park Plaza, Bahrain Bank
- The Modern Art Performance Center of Trinidad and Tobago Republic
- Sydney 2 Market Street
- ANZ Docklands, Australia
- Software Technology Park Lahore, Pakistan
- Vattanac Capital, PHNOM PENH
- Indochina Plaza, Hanoi Vietnam
- Republic of Mauritius Sir Seewoosagur Ramgoolam Internationa Airport Expansion Project, etc.

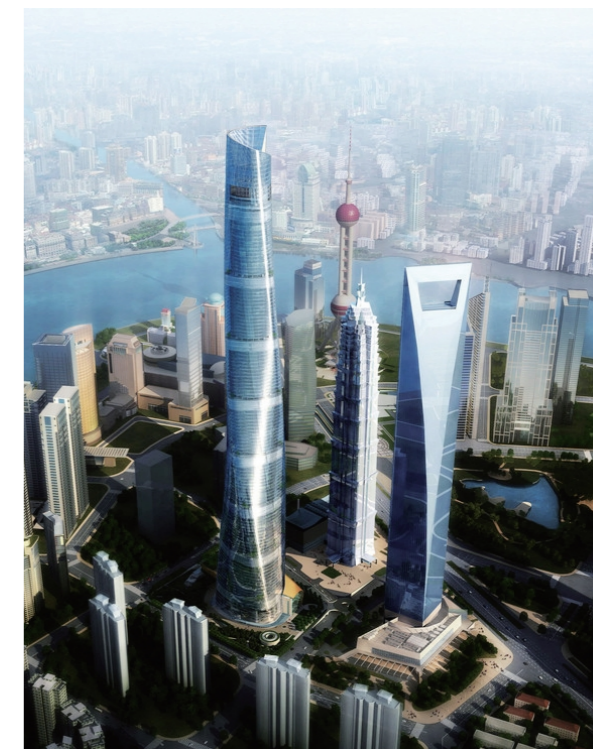
● 上海中心大厦外幕墙A系统检测 / Shanghai Tower

工程名称: 上海中心大厦 Project Name: Shanghai Tower

工程地址: 上海 Location: Shanghai

建筑师: Gensler Architect: Gensler

上海中心大厦外幕墙A系统幕墙样品尺寸为: 投影宽度31.3米, 高18.6米, 幕墙表面离主体结构最大距离为14.7米。



● 阿布扎比中心市场建筑幕墙热工性能测试

工程名称：阿布扎比中心市场
 工程地址：阿布扎比酋长国
 幕墙顾问：Arup Façade Engineering/Meinhardt Facade Technology Ltd.
 Project Name: Central Market Redevelopment, Abu Dhabi
 Location: Abu Dhabi
 Façade Consultant: Arup Façade Engineering/Meinhardt Facade Technology Ltd.

主要试验内容

- 1) 验证设计条件下幕墙的U值（传热系数）；
- 2) 验证设计条件下幕墙的G值（太阳得热因子，即G）；
- 3) 验证设计条件下的幕墙玻璃表面温度（外侧：双层玻璃的内外表面温度，内侧：单层玻璃的内外表面温度）；
- 4) 空腔内部百叶表面温度、竖框表面温度；
- 5) 验证设计条件下的幕墙中间空腔排气温度。

Performance Test

- 1) Verify façade's U-value (heat transmission coefficient) under design conditions;
- 2) Verify façade's G-value (solar heat gain coefficient, G) under design conditions;
- 3) Verify internal and external glass surface temperatures under design conditions (external: external surface of double glass, internal: internal surface of single glass);
- 4) Surface temperature of louver and mullion inside cavity;
- 5) Verify façade's middle cavity exhaust temperature under design condition.



● 柬埔寨安达银行 / Vattanac Capital, PHNOM PENH

工程名称：安达银行
 工程地址：柬埔寨金边
 幕墙顾问：奥雅纳
 Project Name: Vattanac Capital
 Location: PHNOM PENH
 Façade Consultant: ARUP



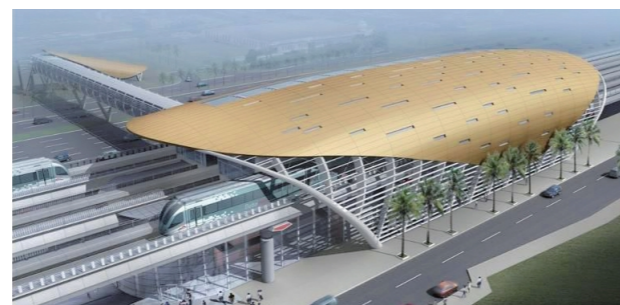
● 毛里求斯机场 / Republic of Mauritius Sir Seewoosagur Ramgoolam International Airport Expansion Project

工程名称：毛里求斯机场
 工程地址：毛里求斯
 幕墙顾问：Louis Berger Group
 Project Name: Republic of Mauritius Sir Seewoosagur Ramgoolam International Airport Expansion Project
 Location: Republic of Mauritius
 Façade Consultant: Louis Berger Group



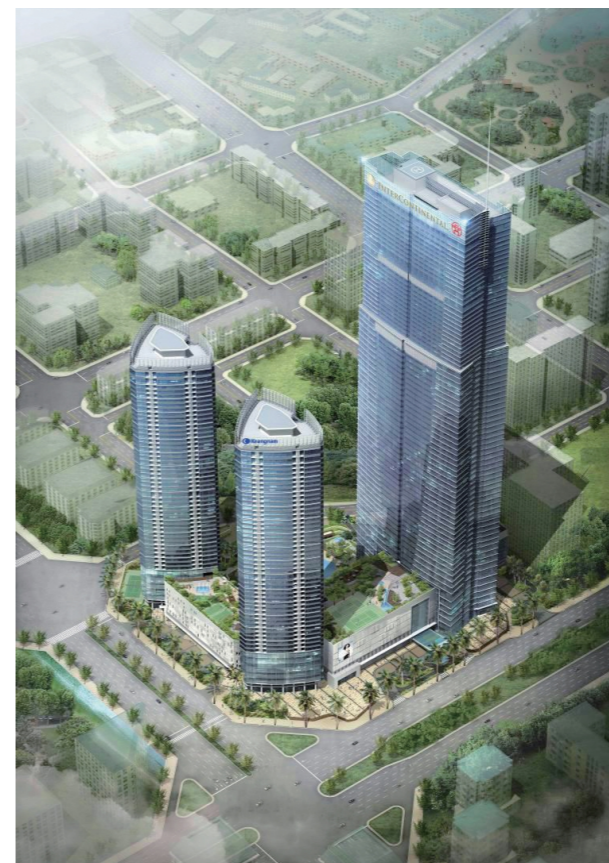
● 迪拜地铁项目—绿线 / Dubai Metro Project—Green Line

工程名称：迪拜地铁项目—绿线
 工程地址：迪拜
 建筑师：英国ATKINS
 Project Name: Dubai Metro Project-Green Line
 Location: Dubai
 Architect: ATKINS



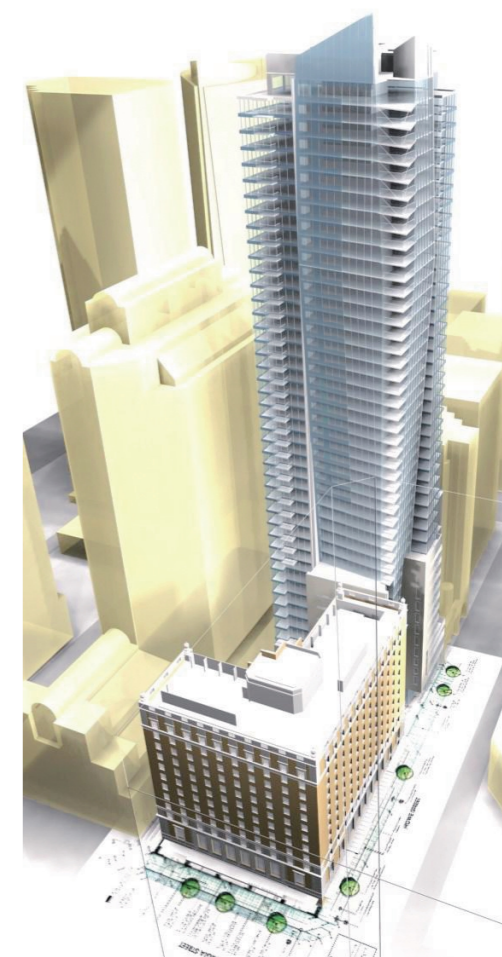
● 康奈 / Keangnam Hanoi Landmark Tower

工程名称：康奈
 工程地址：越南
 幕墙顾问：Enhanced structural engineers network
 Project Name: Keangnam Hanoi Landmark Tower
 Location: Vietnam
 Façade Consultant: Enhanced structural engineers network



● Hotel Georgia

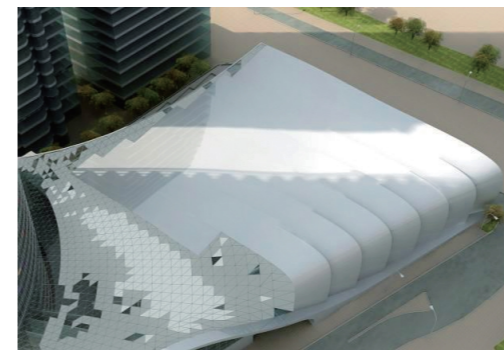
工程名称：Hotel Georgia
 工程地址：加拿大
 建筑设计单位：ENDALL ELLIOT ASSOCIATES
 Project Name: Hotel Georgia
 Location: Canada
 Façade Consultant: ENDALL ELLIOT ASSOCIATES



● 联合大厦 / United Tower

工程名称：联合大厦
 工程地址：科威特
 幕墙顾问：SSH International / MFT

Project Name: United Tower
 Location: Kuwait City
 Façade Consultant: SSH International / MFT



采光顶 Skylight



裙楼 Podium



塔楼 Tower

● ANU Section 68

工程名称: ANU Section 68
 工程地址: 堪培拉
 幕墙顾问: Hyder Consulting Pty. Ltd.
 建筑设计单位: Austech Facades Pty. Ltd.
 Project Name: ANU Section 68
 Location: Canberra
 Façade Consultant: Hyder Consulting Pty. Ltd.
 Architect: Austech Facades Pty. Ltd



● 123 阿尔伯特大街 / 123 Albert Street

工程名称: 123 阿尔伯特大街
 工程地址: 布里斯本
 幕墙顾问: 奥雅纳工程顾问公司
 Project Name: 123 Albert Street
 Location: Brisbane
 Façade Consultant: ARUP



● 迪拜大学医院 / University Hospital, Dubai

工程名称: 大学医院
 工程地址: 迪拜
 幕墙顾问: Ram Koussa
 Project Name: University Hospital, Dubai
 Location: Dubai
 Façade Consultant: Ram Koussa



● 久美拉商务中心 / Jumeirah Business Centre Towers

工程名称: 久美拉商务中心
 工程地址: 迪拜
 幕墙顾问: National Engineering Bureau Architectural & Engineering Consultant
 第三方顾问 (幕墙顾问): Thomas Bell-Wright International Consultants
 Project Name: Jumeirah Business Centre Towers
 Location: Dubai
 Façade Consultant: National Engineering Bureau Architectural & Engineering Consultant
 Third Party Consultant: Thomas Bell-Wright International Consultants



● 威斯敏斯特桥公园广场宾馆

Westminster Bridge Park Plaza Hotel

工程名称: 威斯敏斯特桥公园广场宾馆
 工程地址: 英国
 幕墙顾问: WINTECH (WINDOW AND CLADDING TECHNOLOGY CONSULTANTS)
 Project Name: Westminster Bridge Park Plaza Hotel
 Location: Britain
 Façade Consultant: WINTECH (WINDOW AND CLADDING TECHNOLOGY CONSULTANTS)



● 印度机场 / India Gandhi International Airport

工程名称: 印度机场
 工程地址: 印度
 业 主: 印度德里国际机场 (P) 有限公司
 总包单位: Larsen & Toubro Limited
 Project Name: India Gandhi International Airport
 Location: India
 Property Owner: Delhi International Airport (P) Limited
 Contractor: Larsen & Toubro Limited



● 帝王大厦 / Regal Tower

工程名称: 帝王大厦
 工程地址: 迪拜
 幕墙顾问: THOMAS BELL-WRIGHT INTERNATIONAL CONSULTANTS
 Project Name: Regal Tower
 Location: Dubai
 Façade Consultant: THOMAS BELL-WRIGHT INTERNATIONAL CONSULTANTS



● 迪拜跑马场 / Dubai Racing Club

工程名称: 迪拜跑马场
 工程地址: 迪拜
 Project Name: Dubai Racing Club
 Location: Dubai



● 西班牙港国家艺术中心

The Modern Art Performance Center

工程名称: 西班牙港国家艺术中心
 工程地址: 特立尼达和多巴哥国
 Project Name: The Modern Art Performance Center
 Location: Trinidad and Tobago Republic

● 金奥大厦 / Jinao Tower

工程名称: 金奥大厦
 工程地址: 南京
 建筑设计单位: Skidmore, Owings & Merrill LLP
 Project Name: JINAO TOWER
 Location: Nanjing
 Architect: Skidmore, Owings & Merrill LLP

● 济南恒隆广场 / Jinan Hang Lung Plaza

工程名称: 济南恒隆广场
 工程地址: 山东省
 幕墙顾问: ALT cladding, Inc.
 Project Name: Jinan Hang Lung Plaza
 Location: Shandong Province
 Façade Consultant: ALT cladding, Inc.

● 166 Perry Street

工程名称: 166 Perry Street
 工程地址: 美国
 建筑设计单位: 美国 CCAFT
 CCA Façade Technology, LLC
 上海华艺幕墙系统工程有限公司

幕墙顾问: Sakhnovsky先生
 (美国迈阿密幕墙实验室总裁)
 Project Name: 166 Perry Street
 Location: U.S.A
 Architect: CCAFT / CCA Façade Technology, LLC
 ShangHai Hanart Façade Specialist Co., Ltd.
 Façade Consultant: Mr Sakhnovsky (President of Construction Research Laboratory in Miami)



1	2
4	3



● 成都群光大陆广场 / Chengdu Chicony Plaza

工程名称: 成都群光大陆广场
 工程地址: 中国成都
 建筑设计单位: 美国gp建筑设计有限公司
 Project Name: CHENGDU CHICONY PLAZA
 Location: Chengdu
 Architect: Goettsch Partners, Chicago, Illinois

● 黄浦区155号东街坊地块

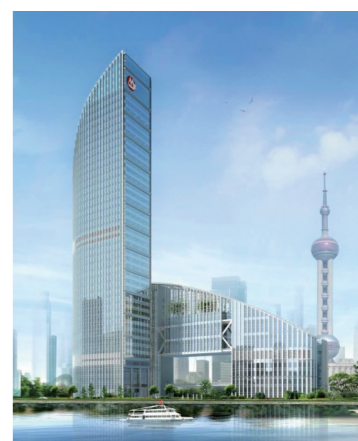
HENDERSON 155 Project

工程名称: 黄浦区155号东街坊地块
 工程地址: 上海
 幕墙顾问: 奥雅纳工程顾问香港有限公司
 Project Name: HENDERSON 155 Project
 Location: Shanghai
 Façade Consultant: Ove Arup & Partners Hong Kong Ltd

● 招商银行上海大厦

China Merchants Bank Tower Shanghai Building, PRC

工程名称: 黄浦区155号东街坊地块
 工程地址: 上海
 幕墙顾问: 奥雅纳工程顾问香港有限公司
 Project Name: China Merchants Bank Tower Shanghai Building, PRC
 Location: Shanghai
 Façade Consultant: Ove Arup & Partners Hong Kong Ltd



● 上海康桥半岛市镇中心

Shanghai Kangqiao Peninsula Town Center

工程名称: 上海康桥半岛市镇中心
 工程地址: 上海
 幕墙顾问: 迈进外墙工程设计(上海)有限公司
 Project Name: CHENGDU CHICONY PLAZA
 Location: Shanghai
 Façade Consultant: MFT

● 静安嘉里中心

Kerry Jing an Center Development

工程名称: 静安嘉里中心
 工程地址: 上海
 幕墙顾问: 艾勒泰建筑工程设计咨询(上海)有限公司
 Project Name: Kerry Jing an Center Development
 Location: Shanghai
 Façade Consultant: ALT

1	2	3
	4	5